



MARCH PUMPS

1819 PICKWICK AVE., GLENVIEW, IL 60026-1306, U.S.A
 PHONE: (847) 729-5300 - FAX: (847) 729-7062
 WWW.MARCHPUMP.COM

BEER PUMPS

DESCRIPTION:

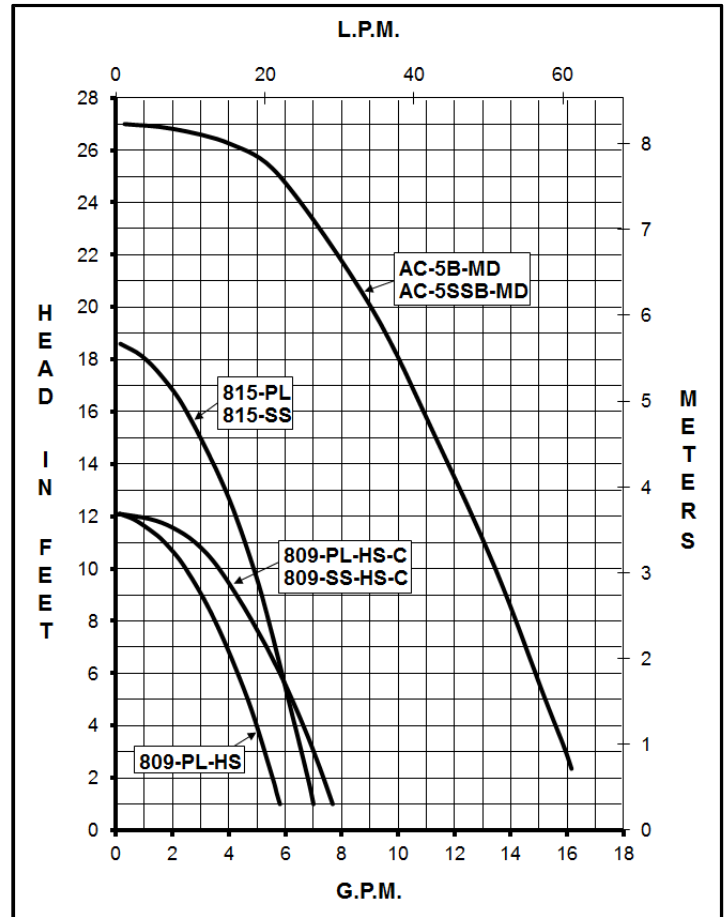
The March beer pump is a non-self-priming magnetic drive unit built specifically to handle hot wort and water. The unit requires liquid being pumped to lubricate the internal parts. If the pump is run dry for a period of time the impeller and shaft may become damaged. To regulate the flow use a valve on the discharge/outlet.

LIMITED WARRANTY:

March pumps are guaranteed only against defects in workmanship or materials for a period of one year from date of manufacture pumping water. Register online at www.marchpump.com/warranty-registration

SPECIFICATIONS	AC-5B-MD		AC-5SSB-MD	
	Abbreviations	SS: Stainless		
Max Flow	60Hz {17 gpm} - 50Hz {60 lpm}			
Max Head	60Hz {27 ft. / 11.7 psi} - 50Hz {6 m}			
Inlet - Outlet	1" FPT - 1/2" MPT			
Internal Pressure	50 psi / 3.4 bar Max		200 psi / 13 bar Max	
Liquid Temperature	250°F / 121°C Max			
Overall Pump Size (H x W x L)	6.19" x 4.52" x 9.27"			
Packed Weight	9.5 lbs / 4.3 kg		12.5 lbs / 5.6 kg	
	60Hz - 115V	50Hz - 115V	60Hz - 230V	50Hz - 230V
Motor Type	Air Cooled - 1 Phase			
Watts - Amps	234 - 2.1	214 - 2.1	250 - 1	223 - 1
Hp / Kw - Rpm	1/8 - 3450	0.093 - 2850	1/8 - 3450	0.093 - 2850
Electrical Connection	3 ft. cord			

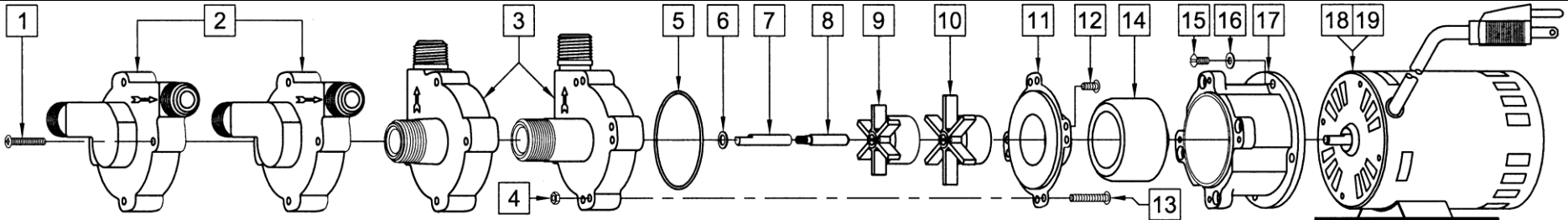
All specifications & data are based on pumping water & are intended as a guideline only. Specifications may vary with different motors.



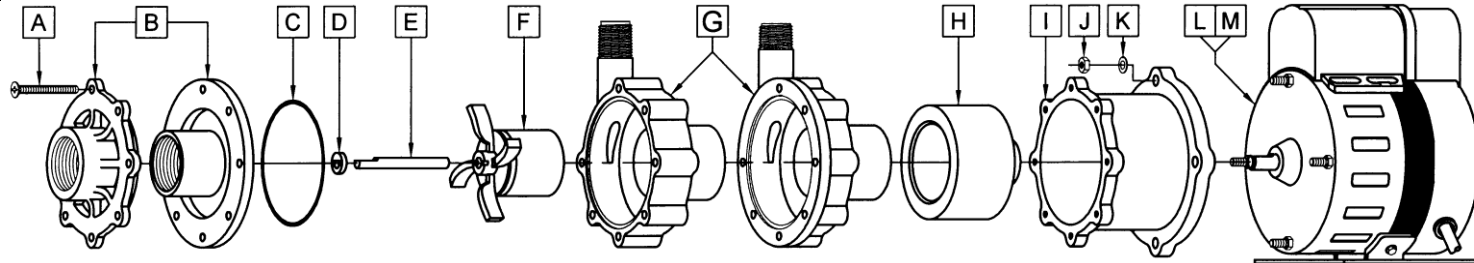
SPECIFICATIONS	809-PL-HS			809-PL-HS-C		809-SS-HS-C		815-PL		815-SS			
	Abbreviations	PL: Polysulfone, SS: Stainless, C: Center Inlet			PL: Polysulfone, SS: Stainless		PL: Polysulfone, SS: Stainless		PL: Polysulfone, SS: Stainless		PL: Polysulfone, SS: Stainless		
Max Flow	60Hz - 50Hz 6 gpm - 18.9 lpm			7.5 gpm - 26.4 lpm		7 gpm - 22.7 lpm		7 gpm - 22.7 lpm		7 gpm - 22.7 lpm			
Max Head	60Hz {12.1 ft. / 5.23 psi} - 50Hz {2.5 m}			60Hz {18.6 ft. / 8.05 psi} - 50Hz {4.1 m}		60Hz {18.6 ft. / 8.05 psi} - 50Hz {4.1 m}		60Hz {18.6 ft. / 8.05 psi} - 50Hz {4.1 m}		60Hz {18.6 ft. / 8.05 psi} - 50Hz {4.1 m}			
Inlet	1/2" MPT			3/8" FPT & 3/4" MPT		3/4" MPT		1/2" MPT		1/2" MPT			
Outlet	1/2" MPT			1/2" MPT		1/2" MPT		1/2" MPT		1/2" MPT			
Max Internal Pressure	50 psi / 3.4 bar			50 psi / 3.4 bar		150 psi / 10 bar		50 psi / 3.4 bar		150 psi / 10 bar			
Liquid Temperature	250°F / 121°C Max			250°F / 121°C Max		250°F / 121°C Max		250°F / 121°C Max		250°F / 121°C Max			
Overall Pump Size (H x W x L)	3.62" x 4.88" x 7.75"			4.37" x 3.50" x 8.43"		4.50" x 3.50" x 8.62"		3.62" x 4.88" x 7.75"		4.87" x 3.33" x 7.74"			
Packed Weight	5 lbs / 2.3 kg			5 lbs / 2.3 kg		6 lbs / 2.7 kg		5 lbs / 2.3 kg		6 lbs / 2.7 kg			
	60Hz - 115V	50Hz - 115V	60Hz - 230V	50Hz - 230V	60Hz - 115V	50Hz - 115V	60Hz - 230V	50Hz - 230V	60Hz - 115V	50Hz - 115V	60Hz - 230V	50Hz - 230V	
Motor Type	Air Cooled - 1 Phase				Air Cooled - 1 Phase				Air Cooled - 1 Phase				
Watts - Amps	97 - 1.4	109 - 1.4	101 - 0.7	110 - 0.7	122 - 1.4	129 - 1.4	126 - 0.7	128 - 0.7	122 - 1.4	129 - 1.4	126 - 0.7	128 - 0.7	
Hp / Kw - Rpm	1/25 - 3450	0.029 - 2850	1/25 - 3450	0.029 - 2850	1/25 - 3450	0.029 - 2850	1/25 - 3450	0.029 - 2850	1/25 - 3450	0.029 - 2850	1/25 - 3450	0.029 - 2850	
Electrical Connection	6 ft. cord w/plug			3 ft. cord		6 ft. cord w/plug		3 ft. cord		6 ft. cord w/plug		3 ft. cord	

All specifications & data are based on pumping water & are intended as a guideline only. Specifications may vary with different motors.

PARTS LIST



#	DESCRIPTION	809-PL-HS	809-PL-HS-C	809-SS-HS-C	815-PL	815-SS	SIZE (Inches)	QTY.	809-PL-HS	809-PL-HS-C	809-SS-HS-C	815-PL	815-SS
1	Screw	Steel	Steel	Stainless	Steel	Stainless	#8-32 x 1 Lg.	4	0923-0003-1000		0809-0205-1000	0923-0003-1000	0809-0205-1000
2	Pump Housing	Polysulfone			Polysulfone	Stainless	Inline Inlet & Outlet	1	0809-0079-0100			0809-0079-0100	0809-0211-0000
3	Pump Housing		Polysulfone	Stainless			Center Inlet	1		0809-0179-0100	0809-0150-0000		
4	Hex Nut			Stainless			#8-32	4			0991-0004-1000		
5	"O" Ring			Silicone			0.070 CS x 2.441 ID	1			0809-0165-1000		0809-0165-1000
6	"O" Ring			Silicone			1/16 CS x 2-3/8 ID	1	0809-0027-1000			0809-0027-1000	
7	Thrust Washer			Teflon				1		0809-0043-1000			
8	Shaft (Old Style)			Stainless			"D" Flat	1					0809-0161-1000
9	Shaft (Current)			Stainless			"D" Flat	1	0809-0161-1000				
10	Shaft (Current)			Stainless			Left-Hand Thread	1					0809-0214-1000
11	Impeller			Ryton/Teflon/Glass			1-11/16 Dia.	1	0809-0005-0200				
12	Impeller			Ryton/Teflon/Glass			2-5/32 Dia.	1				0809-0107-0200	
13	Rear Housing			Stainless				1		0809-0012-1000			
14	Screw			Stainless			#8-32 x 3/8 Lg.	4	0135-0040-1000			0135-0040-1000	
15	Screw			Stainless			#8-32 x 1 Lg.	4			0809-0205-1000		
16	Drive Magnet							1			0125-0083-0100		
17	Screw			Stainless			#8-32 x 3/8 Lg.	4			0135-0040-1000		
18	Washer			Stainless				4			0858-0004-1000		
19	Motor Bracket			Plastic				1			0809-0058-1000		
18	Motor 115V, 50/60Hz w/base						6 foot cord w/plug	1			0809-0196-1000		
19	Motor 230V, 50/60Hz w/base (Not Shown)						3 foot cord	1			0809-0124-1000		



#	DESCRIPTION	MATERIAL	SIZE (Inches)	QTY.	AC-5B-MD	AC-5SSB-MD	#	DESCRIPTION	MATERIAL	SIZE (Inches)	QTY.	AC-5B-MD	AC-5SSB-MD
A	Screw	Stainless	#8-32 x 1-3/4 Lg.	7	0150-0021-1000		G	Rear Housing	Polysulfone/Ceramic	w/Thrust Washer	1	0150-0203-0100	
B	Cover	Polysulfone		1	0150-0189-1000		G	Rear Housing	Stainless		1		0150-0110-0000
C	Cover	Stainless		1		0150-0111-0000	H	Drive Magnet	Plastic		1	0150-0081-0100	
D	"O" Ring	Buna-N		1	0750-0981-1000		I	Motor Bracket	Plastic		1	0150-0070-0100	0150-0126-0100
E	Thrust Washer	Ceramic		1	0130-0028-1000		J	Hex Nut	Stainless	#10-32	4	0625-0024-1000	
F	Shaft	Stainless		1	0939-0003-1000		K	Lock Washer	Stainless	#10 Internal Tooth	4	0802-0006-1000	
G	Impeller w/Shell	Polysulfone/Stainless		1	0150-0173-0200		L	Motor 115V, 50/60Hz w/base		3 foot cord	1	0150-0027-1000	
							M	Motor 230V, 50/60Hz w/base (Not Shown)		3 foot cord	1	0150-0040-1000	

NOTE: Contact Factory for other materials and/or parts not listed.

0750-0976-1000 R6